



## 2012 ELECTION DATES

Presidential Preference Primary January 31, 2012  
Primary Election August 14, 2012  
General Election November 6, 2012

### Book Closing Dates

You must register on or before the book closing date in order to be eligible to vote in that election.

Presidential Preference Primary January 3, 2012  
Primary Election July 16, 2012  
General Election October 9, 2012

### Qualifying Dates

Judicial, State Attorney, Public Defender  
(including write-ins)  
(noon) April 16, 2012 – (noon) April 20, 2012

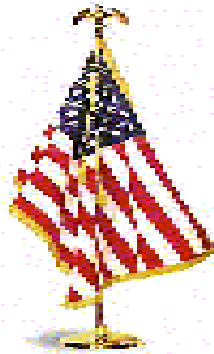
Federal, Statewide, Multicounty, County, Special District  
(including write-ins)  
(noon) June 4, 2012 - (noon) June 8, 2012

\*in years of legislative reapportionment, like 2012, there is not a separate qualifying period for Federal

### Early Voting Dates

Beginning on the 10<sup>th</sup> day before election day and continuing for 8 consecutive days

Presidential Preference Primary January 21, 2012 – January 28, 2012  
Primary Election August 4, 2012 – August 11, 2012  
General Election October 27, 2012 – November 3, 2012



# 2011-2012 TAYLOR COUNTY VOTER GUIDE



**DANA SOUTHERLAND**  
**Supervisor of Elections**

COURTHOUSE  
108 N. JEFFERSON ST., Suite 202  
P. O. BOX 1060  
PERRY, FLORIDA 32348  
850-838-3515  
[taylor-elections@gtcom.net](mailto:taylor-elections@gtcom.net)  
[www.taylor-elections.com](http://www.taylor-elections.com)



Dear Taylor County Voters:

I would like to say thank you to the citizens of Taylor County for allowing me to serve as your Supervisor of Elections. It is an honor

and a privilege to represent each of you.

This brochure is being provided as an educational tool in the hopes that it provides as much public information as any citizen might need.

With the 2010 elections behind us, your elections office is looking forward and already preparing for an eventful 2012 election cycle. I would like to thank each and every person who participated in the 2010 elections. Without the hard work and dedication of each poll worker, the voters would not have encountered such a smooth voting experience. And to each voter that took time out of their busy schedule to cast their ballot, thank you...we would not have had a successful election without you. A special thanks to my staff, their endless determination and dedication is never over-looked and I appreciate each of them and am very blessed to have them as part of Taylor County's election team.

As an elections official it is my duty and responsibility to ensure that your voting rights are protected and that you are confident that your vote is accurately cast and tabulated. We are constantly at work enhancing public confidence in the election process and educating citizens of all ages. The services brought to you by this office will always be in an impartial and non-partisan manner. We will continue to conduct successful elections in compliance with the election laws of Florida and to ensure that every eligible voter has the opportunity to cast a ballot. I believe in fair, honest elections where every vote is counted correctly and considered sacred. It is my desire that all eligible residents not only register to vote, but exercise the privilege we as American citizens have and VOTE !!!

Please don't hesitate to contact me if you have a question, comment, or complaint regarding your voter registration or voting experience. My office is located on the second floor of the County Courthouse and my door is always open. Please feel free to call, email or stop by at any time.

With kind regards,  
*Dana Southerland*  
Dana Southerland  
Supervisor of Elections



### VOTER'S BILL OF RIGHTS

Each registered voter in this state has the right to:

- ✓ Vote and have his or her vote accurately counted
- ✓ Cast a vote if he or she is in line at the official closing of the polls in that county
- ✓ Ask for and receive assistance in voting
- ✓ Receive up to two replacement ballots if he or she makes a mistake prior to the ballot being cast
- ✓ An explanation if his or her registration or identity is in question
- ✓ If his or her registration or identity is in question, cast a provisional ballot
- ✓ Written instructions to use when voting, and, upon request, oral instructions in voting from elections officials
- ✓ Vote free from coercion or intimidation by elections officials or any other person
- ✓ Vote on a voting system that is in working condition and that will allow votes to be accurately cast

### VOTER'S RESPONSIBILITIES

Each registered voter in this state should:

- ✓ Familiarize himself or herself with the candidates and issues
- ✓ Maintain with the office of the supervisor of elections a current address
- ✓ Know the location of his or her polling place and its hours of operation
- ✓ Bring proper identification to the polling station
- ✓ Familiarize himself or herself with the operation of the voting equipment in his or her precinct
- ✓ Treat precinct workers with courtesy
- ✓ Respect the privacy of other voters
- ✓ Report any problems or violation of election laws to the supervisor of elections
- ✓ Ask questions, if needed
- ✓ Make sure that his or her completed ballot is correct before leaving the polling station

**NOTE TO VOTER: Failure to perform any of these responsibilities does not prohibit a voter from voting.**



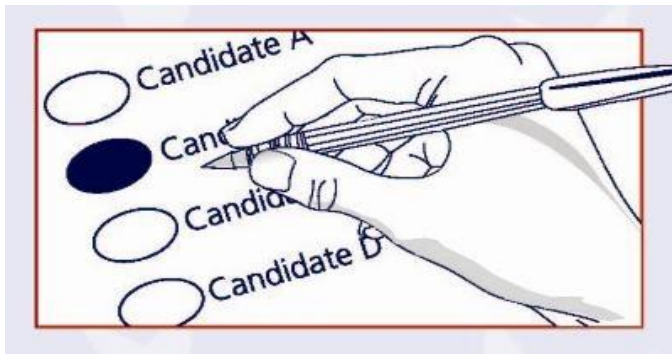


## CORRECT WAY TO VOTE ON A PAPER BALLOT

### Paper Ballot Checklist "Before Leaving the Voting Booth"

Remember to:

1. Completely fill in the oval next to your choice.
2. Make certain there are NO stray marks inside other ovals.
3. Use only the PEN provided at your polling place or a # 2 pencil.
4. Read the ballot carefully, make sure you have not overvoted, if the race states "Vote for One" be sure that you have only filled in one oval in that race.
5. Review both sides of the ballot. Once your ballot is deposited in the tabulator you cannot be issued another ballot.



## FEDERAL OFFICIALS

### **Barack Obama (D) (2012)**

President of the United States  
The White House 1600 Pennsylvania Ave NW  
Washington, DC 20500  
202-456-1414 Fax: 202-456-2461  
email: [president@whitehouse.gov](mailto:president@whitehouse.gov)  
[www.whitehouse.gov](http://www.whitehouse.gov)

### **Vice-Pres. & Senate President – Joe Biden (D)**

The White House 1600 Pennsylvania Ave NW  
Washington, DC 20500  
email: [vice.president@whitehouse.gov](mailto:vice.president@whitehouse.gov)  
[www.whitehouse.gov](http://www.whitehouse.gov)

House Speaker – John Boehner (R) Senate Majority Leader – Harry Reid (D)

### 15 MEMBER FEDERAL CABINET

Secretary of State  
Secretary of the Treasury  
Secretary of Defense  
Attorney General  
Secretary of the Interior  
Secretary of Agriculture  
Secretary of Commerce  
Secretary of Labor  
Secretary of Health and Human Services  
Secretary of Housing and Urban Dev.  
Secretary of Transportation  
Secretary of Energy  
Secretary of Education  
Secretary of Veteran Affairs  
Secretary of Homeland Security

### **Marco Rubio (R) – 6 yr term (2016)**

U.S. Senator – Florida  
Hart Senate Office Bldg # 317  
Washington, DC 20510  
202-224-3041  
Fax: 202-228-5171  
[http://rubio.senate.gov/contact\\_form.cfm](http://rubio.senate.gov/contact_form.cfm)  
<http://rubio.senate.gov/>  
Jacksonville Office:  
1650 Prudential Drive, Suite 220  
Jacksonville, Florida 32207  
904-398-8586  
Toll Free: 1-866-630-7106

### **Bill Nelson (D) – 6 yr term (2012)**

U.S. Senator -Florida  
716 Hart Senate Office Bldg  
Washington, DC 20510  
202-224-5274  
Fax: 202-228-2183  
[www.billnelson.senate.gov](http://www.billnelson.senate.gov)

Hillary R Clinton  
Timothy F Geithner  
Robert M Gates  
Eric H Holder, Jr  
Kenneth L Salazar  
Thomas J Vilsack  
Gary F Locke  
Hilda L Solis  
Kathleen Sebelius  
Shau Donovan  
Ray L LaHood  
Steven Chu  
Arne Duncan  
Eric K Shinseki  
Janet Napolitano  
**Steve Southerland (R) – 2 yr term (2012)**  
U.S. Representative Dist. 2  
1229 Longworth House Office Bldg  
Washington, D.C. 20515  
202-225-5235  
Fax: 202-225-5615  
Tallahassee Office:  
3116 Capital Circle NE, Suite 9  
Tallahassee, Florida  
850-561-3979  
Fax: 850-681-2902  
[southerland.house.gov](http://southerland.house.gov)

Florida Office:  
Courthouse Annex  
111 North Adams St.  
Tallahassee, FL 32301  
850-942-8415  
Fax: 850-942-8450  
Toll free: 1-888-671-4091

## STATE OFFICIALS

**Rick Scott, Governor (R) (2014)**  
The Capitol, 400 South Monroe St.  
Tallahassee, FL 32399  
Tel: 850-488-7146  
email: [rick.scott@eog.myflorida.com](mailto:rick.scott@eog.myflorida.com)  
<http://www.flgov.com>

**Lieutenant Governor: Jennifer Carroll (R)** 850-488-4711  
email: [jennifer.carroll@eog.myflorida.com](mailto:jennifer.carroll@eog.myflorida.com) Fax: 850-921-6114  
<http://www.flgov.com>

**Attorney General: Pam Bondi (R)** 850-245-0140  
email: [pam.bondi@myfloridalegal.com](mailto:pam.bondi@myfloridalegal.com) Fax: 850-487-2564  
<http://myfloridalegal.com> 1-866-966-7226

**Chief Financial Officer: Jeff Atwater (R)** 850-413-2850  
email: [jeff.atwater@myfloridacfo.com](mailto:jeff.atwater@myfloridacfo.com) Fax: 850-413-2950  
<http://www.myfloridacfo.com> 1-877-693-5236

**Comm. of Agriculture: Adam Putnam (R)** 850-488-3022  
email: [adam.putnam@freshfromflorida.com](mailto:adam.putnam@freshfromflorida.com) Fax: 850-617-7744  
<http://www.doacs.state.fl.us>

**Secretary of State-appt Kurt S Browning** 850-245-6524  
email: [secretaryofstate@dos.state.fl.us](mailto:secretaryofstate@dos.state.fl.us) Fax: 850-245-6125  
[www.dos.state.fl.us](http://www.dos.state.fl.us)

**Comm. of Education-appt-Gerard Robinson** 850-224-0505  
email: [commissioner@fldoe.org](mailto:commissioner@fldoe.org) Fax: 850-245-9667  
<http://fldoe.org/commissioner/>

### STATE SENATOR – DISTRICT 3

**CHARLES S “CHARLIE” DEAN SR (R) – 4 yr term (2012)**

415 Tompkins St 302 Senate Office Bldg  
Inverness, FL 34450 404 S. Monroe St  
352-860-5175 Tallahassee, FL 32399  
Toll Free: 866-538-2831 850-487-5017  
Email: [dean.charles.web@flsenate.gov](mailto:dean.charles.web@flsenate.gov) [www.flsenate.gov](http://www.flsenate.gov)

### STATE REPRESENTATIVE – DISTRICT 10

**LEONARD L BEMBRY (D) – 2 yr term (2012)**

405 House Office Bldg 304 NW Crane Ave, Bldg 36  
402 S. Monroe St Madison, FL 32340  
Tallahassee, FL 32399 850-973-5630  
850-488-7870  
email: [leonard.bembry@myfloridahouse.gov](mailto:leonard.bembry@myfloridahouse.gov)

-Wanted-  
Someone to speak to your club or group about the election  
process.  
Call 850- 838-3515

## VOTING MACHINES

After you sign in at the polling place:

If you are disabled and wish to vote on the Touch screen Unit, please tell the poll worker. All other voters must vote on the Optical Scan Unit.

Optical Scan - An Optical Scan ballot is a paper ballot with ovals to the left of each candidate or issue that the voter must completely fill in indicating their choice.



**\*Optical Scan Unit used for paper ballots**

ADA Touch screen - ADA Touch screen is where you will receive a touch screen ticket and a poll worker will direct you to the ADA Touch screen machine.

ADA Touch screen Audio - If you prefer to hear an audio version of your ballot versus the visible screen, please inform your poll worker.



**\*ADA Touch screen Unit used for visual and audio aid**

Before you cast your ballot, be sure your ballot reflects your choices. Once your vote is cast, you cannot receive another ballot in that election. Voters can only cast one ballot in any election, but have three attempts to do so.



## PRECINCT NAMES AND LOCATIONS

- PRECINCT 1 FIRST UNITED METHODIST CHURCH  
302 N Jefferson St, Perry
- PRECINCT 2 TAYLOR TECHNICAL INSTITUTE  
3233 Hwy 19 S, Perry
- PRECINCT 3 BLUE CREEK BAPTIST CHURCH  
21028 Beach Rd, Perry
- PRECINCT 4 SALEM BAPTIST CHURCH  
10400 Fish Creek Rd, Salem
- PRECINCT 5 STEINHATCHEE COMMUNITY CENTER  
10135 Riverside Dr, Steinhatchee
- PRECINCT 6 SHADY GROVE ADULT LITERACY CENTER  
4225 Alton Wentworth Rd, Shady Grove
- PRECINCT 7 JOHNSON STRIPLING RD VOTING HOUSE  
3160 Johnson Stripling Rd, Perry
- PRECINCT 8 PACE UNION BUILDING  
1878 S Old Dixie Hwy, Perry
- PRECINCT 9 FOREST CAPITAL ARMORY  
203 Forest Park Drive, Perry
- PRECINCT 10 LAKESIDE BAPTIST CHURCH EDUCATION BUILDING  
3111 Lakeside Dr, Perry
- PRECINCT 11 KELLY GRADE VOTING HOUSE  
3239 Kelly Grade, Perry
- PRECINCT 12 PERRY SHRINE BUILDING  
1050 Courtney Rd, Perry
- PRECINCT 13 JERKINS BUILDING  
1201 Martin Luther King Ave, Perry
- PRECINCT 14 HIGHWAY PATROL BUILDING  
2275 U S Hwy 19 N, Perry

All 14 precincts will be open from 7:00 am until 7:00 pm during Election Day.  
Remember to bring your picture and signature ID when voting at the polls.

## TAYLOR COUNTY OFFICIALS

### COUNTY ATTORNEY

**Conrad C. Bishop, Jr.**  
411 N. Washington St.  
Perry, Fl 32347  
850-584-6113

### SHERIFF

**L. E. "Bummy" Williams (D) (2012)**  
108 N Jefferson St, Suite 103  
Perry, Fl 32347  
850-584-4225  
[www.taylorcountysheriff.fl.org](http://www.taylorcountysheriff.fl.org)

### CLERK OF THE COURT

**Annie Mae Murphy (D) (2012)**  
P. O. Box 620  
Perry, Fl 32348  
850-838-3506  
[www.taylorclerk.com](http://www.taylorclerk.com)

### COUNTY JUDGE

**Stephen (Buddy) Murphy (2012)**  
P. O. Box 914  
Perry, Fl 32348  
850-838-3510  
[www.jud3.flcourts.org/Judges](http://www.jud3.flcourts.org/Judges)

### TAX COLLECTOR

**Jack Tedder (D) (2012)**  
P. O. Box 30  
Perry, Fl 32348  
850-838-3517 (tags/license)  
850-838-3580 (tax dept)

[www.taylorcountytaxcollector.com](http://www.taylorcountytaxcollector.com)

### PROPERTY APPRAISER

**Bruce Ratliff (D) (2012)**  
P. O. Box 936  
Perry, Fl 32348  
850-838-3511  
[www.taylorcountypa.com](http://www.taylorcountypa.com)

### SUPERVISOR OF ELECTIONS

**Dana Southerland (D) (2012)**

P. O. Box 1060  
Perry, Fl 32348  
850-838-3515

email: [taylor-elections@gtcom.net](mailto:taylor-elections@gtcom.net)

[www.taylor-elections.com](http://www.taylor-elections.com)

Poll Workers  
If you are interested come by the elections office or call  
850-838-3515 for an application



## **BOARD OF COUNTY COMMISSIONERS**

201 E Green St  
Perry, Florida 32347  
COUNTY ADMINISTRATOR  
**Jack Brown**

Email: [Jack.Brown@taylorcountygov.com](mailto:Jack.Brown@taylorcountygov.com)  
850- 838-3500  
[www.taylorcountygov.com](http://www.taylorcountygov.com)

### **Malcolm V Page (D) #1 (2012)**

Precincts 12 & 14

3765 U S 19 N

Perry, Fl 32347

Phone: 850-584-9489

[Mpage@taylorcountygov.com](mailto:Mpage@taylorcountygov.com)

### **Mark Wiggins (D) #2 (2014)**

Precincts 2 & 8

217 Pineland St

Perry, Fl 32348

[mwiggins@taylorcountygov.com](mailto:mwiggins@taylorcountygov.com)

Phone: 850-584-8269

### **Lonnie A Houck, Jr (D) #3 (2012)**

**Chairman**

Precincts 3, 4, 5, 10 & 11

20538 Keaton Beach Rd

Perry, Fl 32348

Phone: 850-578-2100

[Lonnie.houck@taylorcountygov.com](mailto:Lonnie.houck@taylorcountygov.com)

### **Pam Feagle (D) #4 (2014)**

Precincts 1, 6 & 7

405 Bishop Blvd

Perry, Fl 32347

Phone: 850-584-3681

[pfeagle@taylorcountygov.com](mailto:pfeagle@taylorcountygov.com)

### **Patricia Patterson (D) #5 (2012)**

Precincts 9 & 13

P. O. Box 1123

Perry, Fl 32348

Phone: 850-584-6658

[ppatterson@taylorcountygov.com](mailto:ppatterson@taylorcountygov.com)

### **Meet:**

1<sup>st</sup> Monday – 5:30 p.m. Courthouse Annex

3<sup>rd</sup> Tuesday – 5:30 p.m. Courthouse Annex

### **Local Party Chairpersons**

Taylor County Democratic Party

Jack Swain

850- 584-4147

Taylor County Republican Party

Pat Palaio

850- 584-5878



## **Three Ways to Vote in Taylor County**



### **1. Absentee Ballot:**

- All Taylor County registered voters are eligible.
- Voters may also complete an absentee ballot request form (this form can be found on our web site ([www.taylorcountyelections.com](http://www.taylorcountyelections.com)))
- Voters may request an absentee ballot by calling the Supervisor of Elections office at 850-838-3515.
- Deadline to request an absentee ballot be mailed to a voter is the Wednesday prior to an election.
- Deadline to mail absentee ballots to voters is the Friday prior to each election.
- Absentee ballots are rejected if they do not have a signature, or if they are received after the deadline.
- All ballots need to be returned to the Supervisor of Elections office by 7:00 PM on election day

### **2. Early Voting:**

- Early voting begins 10 days prior to each election and continues for 8 consecutive days.
- Early Voting takes place in the Supervisor of Elections office on the 2<sup>nd</sup> floor of the County Courthouse.

### **3. Election Day:**

- Voters must vote in the precinct in which they reside. It is a felony to vote in a precinct in which you do not reside.
- Polls open at 7:00 am and close at 7:00 pm. All voters in line at 7:00 pm will be permitted to vote.
- Voters may NOT drop off absentee ballots at voting precincts. Absentee ballots may only be dropped off at the Supervisor of Elections office and must be returned no later than 7:00 pm in order for them to be canvassed.



On Election Day and during Early Voting, accessible electronic voting is available for persons with disabilities.

## VOTING EQUIPMENT

### Accu-Vote Optical Scanner

Taylor County has used an optical scan tabulation system since the fall of 1999.

The voter places his or her voted ballot into the scanner at the polling place or early voting site. If the voter has voted for more than one candidate in a race where only one vote is allowed, the scanner will reject the ballot and allow the voter the chance to mark another ballot; the scanner will also reject a completely blank ballot.

The ballot has ovals to the left of the candidate's name or issue. The voter must completely fill in the oval to be sure their vote will count. Voters should not mark their ballot with an X or a check mark. These marks may not count.

A marking pen is provided in the voting booth for the voter. However, all of our AccuVotes have visible light read heads, which do not require a special type of pen. A pencil or ballpoint pen can be used when voting absentee.

If you make a mistake on your ballot, please do not erase or use whiteout. If you are voting at your polling place, ask for another ballot. If you are voting by Absentee Ballot and you make a mistake, please call the elections office at 850-838-3515 so a new ballot can be mailed to you.

### Accu-Vote Touch Screen

One audio-enhanced, accessible touch screen voting machine is available in each polling place and early voting site. This additional piece of equipment provides the opportunity for voters with low vision, voters who are blind or voters who are otherwise unable to cast a paper ballot without assistance to vote independently.

The accessible voting equipment has many features.

- The voter can choose to magnify the screen increasing the size of the ballot text and vote by touching the screen or by using a keypad.
- The voter can choose to listen to the ballot through a headset and vote by using a keypad.
- The voter can increase or decrease the volume and has the ability to control the speed at which the audio ballot is being read by pressing a button.
- The voter can be seated or stand while using the accessible voting equipment.
- All ballot choices can be reviewed and confirmed by the voter prior to casting a final ballot.

If you need to use this equipment or know someone who does, please notify the poll worker.

To learn more about this equipment or for a demonstration, please contact the elections office at 850-838-3515.

## CITY OFFICIALS TAYLOR COUNTY

City of Perry  
City Hall  
224 S. Jefferson St.  
Perry, Florida 32347  
850- 584-7161  
Fax: 850-584-2619  
<http://cityofperry.net>

**CITY MANAGER**---**Bob Brown** – 850-584-7161 - [bbrown@cityofperry.net](mailto:bbrown@cityofperry.net)  
**POLICE CHIEF**---**Vern Clark** – 850-584-5121 – [vclark@flcjin.net](mailto:vclark@flcjin.net)

## CITY COUNCIL

### District 1

**Sylvester Harris (2012)**  
250 Front St  
Perry, Fl 32348  
(850) 584-3467  
[sharris@cityofperry.net](mailto:sharris@cityofperry.net)

### District 3

**Emily Weed Ketring, Mayor (2012)**  
403 N Quincy St  
Perry, Fl 32347  
(850) 584-9273  
[emily@ketring.com](mailto:emily@ketring.com)

### District 5

**Daryll T Gunter (2014)**  
111 Ridge Road  
Perry, Fl 32348  
(850) 584-5633  
[daryll\\_gunter@hotmail.com](mailto:daryll_gunter@hotmail.com)

### District 2

**Alphonso Dowdell, Vice-Mayor (2012)**  
312 Second St  
Perry, Fl 32348  
(850) 584-5677  
[adowdell@cityofperry.net](mailto:adowdell@cityofperry.net)

### District 4

**Donald H Cook (2014)**  
104 Bishop Blvd.  
Perry, Fl 32347  
(850) 584-3951  
[dcook@fcrr.org](mailto:dcook@fcrr.org)

### City Attorney

**Michael S Smith**  
411 N Washington St  
Perry, Florida 32347  
850-584-3812  
[www.smithandsmithpa.net](http://www.smithandsmithpa.net)

Meet: 2<sup>nd</sup> and 4<sup>th</sup> Tuesday – 6:30 p.m. City Council Meeting Room  
TAYLOR COUNTY SCHOOL OFFICIALS



**DISTRICT SUPERINTENDENT OF SCHOOLS**

**Paul Dyal (D) (2012)**

Administrative Offices

Alton H Wentworth Administrative Complex

318 N Clark St

Perry, Fl 32347

Phone: 850-838-2500

Fax: 850-838-2501



**SCHOOL BOARD MEMEBERS**

**Danny Glover #1 (2014)**

Precincts 12 & 14

5375 Woods Creek Rd

Perry, Fl 32347

Phone: 850-223-2092

**Darrell Whiddon #3 (2012)**

Precincts 3, 4, 5, 10 & 11

11595 South U.S. 19

Perry, Fl 32348

Phone: 850-584-3218

**Kenneth Dennis #5 (2012)**

Precincts 9 & 13

P. O. Box 1891

Perry, Fl 32348

Phone: 850-584-5971

**Brenda Carlton #2 (2014)**

**Chairman**

Precincts 2 & 8

7055 Puckett Rd

Perry, Fl 32348

Phone: 850-584-7454

**Danny Lundy #4 (2014)**

**Vice-Chairman**

Precincts 1, 6 & 7

4445 Loren Henderson Rd

Perry, Fl 32347

Phone: 850-584-4979

School Board Attorney

**Angela Ball**

P. O. Box 734

Perry, Fl 32348

Phone: 850-584-8960

**VOTE IN HONOR OF A VETERAN**

Generation after generation of our families has been deeply affected by the various conflicts and wars our nation has fought. The global war on terror, which includes Operation Iraqi Freedom and Operation Enduring Freedom, affects every single one of us today and continually reminds us of the freedoms we often take for granted - freedoms that our veterans fought for and freedoms that our military continue to fight to defend today.

The sacrifices our veterans have made on behalf of this great state and nation stand as examples that emphasize the need for us to take our responsibilities seriously, especially our right to vote.

The Taylor County Supervisor of Elections Office is pleased to introduce the **Vote in Honor of a Veteran** program to our voters. While new to Taylor County, this program is not new around the state and country. Several other Florida counties and other states have variations of this program that are tailored to fit the needs in their communities.

The goal of Taylor County's **Vote in Honor of a Veteran** program is to encourage voter participation, as well as to have another avenue to teach our voting-age youth about the sacrifices our veterans have made and continue to make every day, so that we may continue to live in a democratic society. By exercising our right to vote, we show veterans the respect they deserve for protecting our democracy.

Veterans have always served us honorably. Let's give them the recognition they have earned. The next time you vote, **Vote in Honor of a Veteran.**

**HERE'S HOW THE PROGRAM WORKS**

Veterans and family members of veterans who wish to participate will complete and submit a photo and a short biography on a **Vote in Honor of a Veteran** biography form. The form may be completed by a family member of a veteran, a veteran, or by family members of deceased veterans or missing in action veterans. (The photograph will be scanned and returned to you as promptly as possible). Contact the Supervisor of Elections office for information on obtaining a biography form and further details.

Meet:

1<sup>st</sup> and 3<sup>rd</sup> Tuesday – 7:00 p.m. Alton H. Wentworth Adm. Complex



## *Do You Need to Update Your Signature?*



As we get older our signature begins to change and so many things are now verified by signature that it is very important to keep yours updated. If you vote by absentee ballot or sign a petition for a candidate or an issue, your signature will be verified with the signature we have on your voter registration record. If your signature has changed and you fail to update that with us, then you risk your absentee ballot being questioned by the canvassing board or your petition being rejected due to a signature difference. If due to health reasons you are no longer able to sign your name, please contact our office so that we may explain the proper procedure for documenting such. This will ensure that a voter's registration record is accurate before the next election. If you have any questions concerning your registration record or would like to update your signature, please contact the elections office at 850-838-3515.

### *Do We Have Your Correct Address?*



Have you moved since you last voted? Florida Statutes states that you must vote in the precinct with which you reside. If you have any questions concerning your registration record or would like to update your address over the phone, please contact the elections office at 850-838-3515.

### *What to Expect on Election Day*

If a voter chooses to cast a ballot on Election Day, he or she must go to their assigned precinct. Call the Supervisor of Elections Office at 850- 838-3515 to verify your correct polling location. Voting should be a quick, satisfying experience if you follow a few simple steps. Here are some tips on what to expect at the polls on Election Day: First, a voter should notify a poll worker should he or she need assistance to vote. A voter may bring someone to the precinct location for assistance or a request can be made to the poll worker to provide assistance.

Be sure to bring your picture and signature ID - such as a Florida Driver's license - to the polls with you. To ensure a quick process, any changes to your name and address since the last election should be updated with the Supervisor of Elections office prior to Election Day. If you do not show a valid picture and signature ID, you must vote a provisional ballot. If the signature on record at the Supervisor of Election office matches that on the Provisional Ballot Certificate, the canvassing board will accept the ballot. When you arrive at your precinct, a poll worker will ask to see your picture and signature ID, find your name in the precinct register and ask you to sign for receipt of your ballot. It is important that you review your ballot for accuracy prior to casting your ballot. Once the voting equipment has accepted your ballot, no further changes or corrections can be made.

Florida Statute 101.043 requires photo and signature identification at the polling place.

Florida Driver's License  
Florida ID card issued by the DHSMV  
Military Identification  
Retirement Center Identification  
Neighborhood Association Identification

United States Passport  
Debit or Credit Card  
Student Identification  
Public Assistance Identification

## THIRD JUDICIAL CIRCUIT

(Columbia, Dixie, Hamilton, Lafayette, Madison, Suwannee, Taylor)

### **Paul S Bryan – Group 1 (2016)**

P. O. Box 2083  
Lake City, FL 32056-2083  
386-758-2147

### **E. Vernon Douglas – Group 2 (2012)**

P. O. Drawer 2075  
Lake City, FL 32056-2075  
386-758-1010

### **David Fina – Group 3 (2012)**

**Chief Judge**  
200 S Ohio Ave, Suite # 104  
Live Oak, FL 32060  
386-362-6353

### **Greg S Parker – Group 4 (2014)**

Madison County Courthouse  
P O Box 1060  
Madison, FL 32341  
850-253-0165

### **James Roy Bean – Group 5 (2012) Julian E. Collins – Group 6 (2014)**

P. O. Drawer 1000  
Perry, FL 32348  
850-838-3520

P O Box 2077  
Lake City, FL 32056  
386-719-7546

### **Leandra G Johnson – Group 7 (2014)**

P O Box 2123  
Lake City, FL 32056  
386-719-2012

## THIRD CIRCUIT PROSECUTOR & DEFENDER

### **Robert L "Skip" Jarvis, Jr (D) (2012)**

State Attorney  
173 NE Hernando Ave, Suite 420  
Lake City, FL 32055  
386-758-0470  
Taylor County Office:  
County Courthouse  
108 N Jefferson St, Suite 301  
Perry, Florida 32347  
850-584-2886

### **Dennis Roberts (D) (2012)**

Public Defender  
145 N Hernando St  
Columbia County Courthouse  
Lake City, FL 32055  
386-758-0540  
850-584-2830



## TAYLOR COUNTY SCHOOLS

### **Taylor County High School**

Michael Thompson, Principal  
900 Johnson Stripling Road, Perry Fl 32347  
(850) 838-2525

### **Taylor County Middle School**

Kiki Puhl, Principal  
601 East Lafayette Street, Perry Fl 32347  
(850) 838-2516

### **Taylor County Elementary School**

Shelly Strickland, Principal  
1600 East Green Street, Perry Fl 32347  
(850) 838-2530

### **Perry Primary School**

Pam Padgett, Principal  
400 North Clark Street, Perry Fl 32347  
(850) 838-2506

### **Taylor Technical Institute**

Jim Brannan, Director  
3233 Highway 19 South, Perry Fl 32348  
(850) 838-2545

### **Steinhatchee School**

Sandy Hendry, Principal  
1209 Southeast First Avenue, Steinhatchee, Fl 32359  
P. O. Box 790  
(352) 498-3303

### **Taylor County Pre-K**

Sandy MacDonald, Director  
508 Aquinaldo Ave, Perry Fl 32347  
(850) 838-2535

### **Head Start**

Eric Scott, Director  
520 E Lafayette Street, Perry Fl 32347  
(850) 838-2558



## **Absentee Voting**



If you are a qualified voter in the state, you are entitled to vote an absentee ballot. Requests can be accepted *only* from the voter, a member of the voter's immediate family or legal guardian. Immediate family means the voter's spouse or the parent, child, grandparent, or sibling of the voter or of the voter's spouse. Your request may be by mail, phone, or in person at the Supervisor of Elections Office. Voters can return an absentee ballot to the elections office, either *in person* or by *mail*. An absentee ballot must be received no later than 7:00 p.m. on Election Day. A voted absentee ballot cannot be accepted at a polling precinct.

## **Your Political Party**

You may choose to register in a political party or to register with no party affiliation. Registration in a political party enables you to vote in that party's primary only, and in nonpartisan and general elections.

However, Article VI, Section 5 (b) Florida Constitution, provides that if all candidates have the same party affiliation and the winner will have no opposition in the general election, all qualified electors, regardless of party affiliation, may vote in the primary election for that office.

School board members run by district and are now nonpartisan, meaning that all registered voters in the district are entitled to vote in this race regardless of party.

## **Book Closing**

The book closing date is the statewide deadline to register to vote, or to change your political party for any election if already registered. Book closing is 29 days prior to an election. For first time voters in Florida, or requests for party changes, a completed voter registration form must be in the Supervisor of Elections' office, or postmarked, by the book closing date. If you have relocated to a new address within Florida, register that address with the Supervisor of Elections' office as soon as possible.

When the registration books are closed for an election, updates to a voter's name, address, and signature shall be the only changes permitted for purposes of the upcoming election. Voter's registration applications and party changes must be accepted but only for the purpose of subsequent elections.

## **Closed Primary**

By law, Florida is a closed primary state, in a primary election, voters may only vote for candidates in their party of registration. By not selecting a party when you register, your vote is limited in the primaries to nonpartisan races and issues. In the general election, you may vote for any candidate, regardless of party preference.

A Universal Primary Contest or "UPC" means a contest in a primary election in which all candidates have the same party affiliation and the winner will have no opposition in the general election. All qualified electors may vote on a Universal Primary Contest regardless of party affiliation.



### How To Register

You may pick up an application from one of the following locations or you may call the elections office and a form can be mailed to you. You may also visit our website at [www.taylor-elections.com](http://www.taylor-elections.com) where you will find an easy to complete online registration form.

Supervisor of Elections Office	Senior Service Center
Driver's License Office	HRS
WIC	by Mail
Public Library	Hunting/Fishing License Locations

Once you have completed your voter registration application, mail or deliver it to the Supervisor of Elections office. A voter identification card will be mailed to the applicant at the mailing address indicated on the registration form.

Note: Persons adjudicated mentally incapacitated or convicted felons, who have not had their rights restored, are not eligible to register to vote.

### Requirements to Register to Vote

You may register to vote if you are:

- a U.S. Citizen
- a resident of the State of Florida (you must vote in your county of residence)
- 18 years of age (you may pre-register at 16 but you must be 18 in order to vote)
- in possession of civil rights pertaining to voting

### Voter Responsibility

It is very important that each voter keep his or her record updated. If you change your name, address, or party affiliation, you will need to complete a new voter application. Please call the Elections Office at 850-838-3515 for more information or notify us in writing.

### Update of Voter Signature

When you return an absentee ballot or sign a petition, your signature is verified against the signature we have on file. If the signatures do not match, your absentee ballot may not be counted or your petition may not be accepted. Voters may update their signature by completing a voter registration application. Send all correspondence to the Elections Office.

### Identification Requirements

In order to vote you must present both signature and photo identification. It can be one form of identification, such as a Florida driver license, or two separate forms of identification. If you do not have proper identification you will be allowed to vote a provisional ballot.

### Early Voting

Any registered voter may participate in early voting. This procedure begins on the 10<sup>th</sup> day before an election and continues for 8 consecutive days. Exact dates and times are advertised prior to an election. A picture and signature ID is required.



### STATE JUDICIAL SYSTEM

Supreme Court

Supreme Court Building  
500 South Duval Street  
Tallahassee, FL 32399-1925  
(850) 488-8421

<http://www.flcourts.org>

**Charles T Canady – Chief Justice**

<b>R Fred Lewis</b>	<b>James E.C. Perry</b>
<b>Jorge Labarga</b>	<b>Ricky Polston</b>
<b>Barbara J Pariente</b>	<b>Peggy A Quince</b>

### FIRST DISTRICT COURT OF APPEALS

(1, 2, 3, 4, 8, & 14<sup>TH</sup> Judicial Circuit)

2000 Drayton Drive  
Tallahassee, FL 32399  
850-487-1000

[www.flcourts.org](http://www.flcourts.org)

**Robert T Benton II – Chief Judge**

<b>Simon Marsteller</b>	<b>Lori S Rowe</b>
<b>James R Wolf</b>	<b>Paul M Hawkes</b>
<b>Marguerite H Davis</b>	<b>L Clayton Roberts</b>
<b>Charles J Kahn Jr</b>	<b>Nikki Ann Clark</b>
<b>Joseph Lewis</b>	<b>Phillip J Padovano</b>
<b>Bradford Thomas</b>	<b>T Kent Wetherell, II</b>
<b>William A Van Nortwick, Jr</b>	<b>Peter D Webster</b>

**Important: Registered Voters**  
**If you do not have a current Voter Information Card**  
**Call 850-838-3515**

# Becoming A Candidate

## What is a Candidate?

A candidate is defined in 97.021(3), Florida Statutes, as any person to whom any one or more of the following applies:

- Any person who seeks to qualify for nomination or election by means of a petitioning process;
- Any person who seeks to qualify for election as a write-in candidate;
- Any person who receives contributions or makes expenditures or gives their consent for any other person to receive contributions or make expenditures with a view to bringing about their nomination or election to, or retention in, public office;
- Any person who appoints a treasurer and designates a primary depository; or
- Any person who files qualification papers and subscribes to a candidate's oath as required by law.

However, this definition does not include any candidate for a political party executive committee.

Note...

- County Commission candidates for districts 1-5 must reside in the district for which they are qualifying at the time of being elected to office;
- School board candidates must reside in the district for which they are qualifying at the time of qualifying;
- If required, one's current position or office must be resigned under the "resign to run" law (99.012(3), Florida Statutes).

## When do I announce my candidacy?

- Candidacy may be announced at any time;
- Must file Appointment of Campaign Treasurer and Designation of Campaign Depository (Form DS-DE 9) with the Supervisor of Elections office BEFORE you collect any money toward your candidacy, spend any money in furtherance of your candidacy, collect signatures to qualify by the Petition Process, or open a bank account. (106.021, Florida Statutes);
- Must file a Statement of Candidate (Form DS-DE 84) within ten (10) days of filing the Appointment of Campaign Treasurer and Designation of Campaign Depository (106.023, Florida Statutes). The Statement of Candidate is provided by the Supervisor of Elections;
- A judicial candidate must file a Statement of Candidate for Judicial Office (Form DS-DE 83) within ten (10) days of filing the Appointment of Campaign Treasurer and Designation of

Campaign Depository (106.023, Florida Statutes). The Statement of Candidate is provided by the Supervisor of Elections.

- Legislative Candidates must contact the filing officer with the Department of State Division of Elections.

## Is it possible to run for a different office after I become a candidate?

Yes, under 106.021 (1) (a), Florida Statutes, you may change your mind and run for a different office after becoming a candidate, providing that you do the following;

- File a new Appointment of Campaign Treasurer and Designation of Campaign Depository (DS-DE 9), designating the new office;
- Within 15 days of the new appointment, notify, in writing, all contributors and offer to return their contributions in full or pro rata. The Request for Return of Contributions (Form DS-DE 86) may be used for such purpose;
- If, after 30 days from this notice, the contributor has not requested his contribution to be returned, you may use the funds in the campaign for your newly designated office.

## Come In and See Us

If you are interested in becoming a candidate, please stop by our office to pick up a candidate packet and ask any questions you might have.



***"It's not the hand that signs the laws that holds the destiny of America; it's the hand that casts the ballot..." Harry Truman***

# Restoration of Your Civil Rights

Restoration of Civil Rights restores the right to vote, serve on a jury, and hold public office. Certain types of occupations may also require restoration of civil rights prior to applying.

Restoration of Civil Rights does not include Firearm Authority

For information about restoration of your civil rights, as well as an application (both printable and online) please visit the Florida Parole Commission website link below

FLORIDA PAROLE COMMISSION

<https://fpc.state.fl.us/>

or

Call Toll Free: 1-800-435-8236

or

850-488-2925

If you have questions, concerns or need assistance, please contact:

Dana Southerland

Taylor County Supervisor of Elections

County Courthouse

108 N Jefferson St., Suite 202

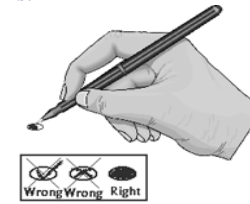
Phone 850-838-3515 Fax 850-838-3516

email: [taylor-elections@gtcom.net](mailto:taylor-elections@gtcom.net)



## How to Vote Your Absentee Ballot

Examine your ballot and read the ballot instructions carefully before voting. Be sure to vote both sides of your ballot. Using black or blue ink (NOT red) or a black pencil, completely fill in the oval next to the left of your choice like this:



- Do not vote for more candidates than the number allowed in each race as indicated by the "Vote for" statement (for example: "Vote for One") or your vote in that race will not count.
- DO NOT: sign your name on the ballot
- DO NOT: use tape to repair a damaged ballot
- DO NOT: tear or cut any portion of your ballot
- DO NOT: erase any markings, if you change your mind about a choice you have made, please call the Supervisor of Elections office and ask for another ballot
- DO NOT: make any stray marks on your ballot
- DO NOT: circle the oval or the candidate's name, you must completely fill in the oval next to your choice
- DO NOT: mark the oval with checkmarks, X's, or dashes

If you do any of these things, or change your mind about your vote in a race after you have marked your ballot, don't hesitate to ask for a new ballot. Otherwise your vote may not count.

You do not have to vote in every race on the ballot. Only mark the races in which you would like to vote, you may leave all other races blank. The races that you have marked will be tabulated. If you vote for more than one candidate in a race that states "Vote for One" only that contest will be affected; any other contests in which the allowed number of candidates are selected will be counted.

If there is a write-in line provided in a race and you wish to vote for a candidate whose name is not printed on the ballot, fill in the oval and write in the candidate's name on the blank line provided. Votes for non-qualified write-in candidates will not be tabulated.

Be sure you sign the Voter's Certificate located on the backside of the return envelope. The Supervisor of Elections office verifies each and every signature on a returned absentee ballot. If you feel your signature has changed and needs to be updated please call the elections office at 850-838-3515 so that a Signature Update card can be mailed to you immediately. If your signature does not match the signature of record, you risk your absentee ballot not being counted.

Those individuals holding a Power of Attorney for someone may NOT sign the Voter's Certificate of an absentee ballot. If the voter is unable to sign their signature, please contact the Supervisor of Elections office for instructions on updating the voter's signature to an "X" as their mark and the proper way to document the "X" on an absentee ballot.

All absentee ballots must be received in the Supervisor of Elections office no later than 7:00 pm on Election Day. Absentee ballots that are postmarked on election day or prior but not received before the 7:00pm Election Day deadline will not be tabulated unless they are overseas military being cast during a federal election.

## POLL WORKER INFORMATION

Join our special group of civic-minded citizens who are trained and ready to serve our community, county and country when elections are scheduled in Taylor County. Poll workers perform a valuable community service by assisting voters at the precinct polling sites on Election Day. Poll workers are paid for their service. If you are interested in becoming one of these committed individuals, please complete a Poll Worker Application and return it to the Supervisor of Elections office.

### TO BECOME A POLL WORKER YOU MUST:

- Be a citizen of the United States
- Be registered to vote in Taylor County
- Be able to speak, read and write the English language
- Have transportation to the polling place and poll worker training sessions
- Be available and physically able to work at the polling place from 6:00 am until after the polls close at 7:00 pm
- Deal with the public in a courteous, patient and professional manner

A poll worker must be available for training. Florida Statute requires that a poll worker receive a certain number of training hours, depending on the position they are working, before each election. These classes involve training on proper Election Day administration and operation of the optical scan and touch screen tabulation equipment.

The number of poll workers needed for each election is determined by the size of the election and the expected turnout. Not every poll worker applicant will work every election.

In summary, a Taylor County Poll Worker must be dedicated! If this sounds like the type of opportunity you would want to pursue we would love for you to join our team.

The role of a poll worker is the cornerstone of our democratic process, and your interest is appreciated. We look forward to hearing from you.

Dana Southerland  
Supervisor of Elections  
P O Box 1060  
Perry, Florida 32348  
850-838-3515  
[taylor-elections@gtcom.net](mailto:taylor-elections@gtcom.net)



## WHAT RACES TO EXPECT ON THE 2012 BALLOT



### FEDERAL OFFICES

President of the United States  
United States Senator – Florida  
United States Representative – District 2

### STATE OFFICES

State Senator – District 3  
State Representative – District 10  
Third Judicial Circuit Judge – Group 2  
Third Judicial Circuit Judge – Group 3  
Third Judicial Circuit Judge – Group 5  
Third Judicial Prosecutor  
Third Judicial Public Defender

### COUNTY OFFICES

County Judge  
Sheriff  
Clerk of Court  
Tax Collector  
Property Appraiser  
Superintendent of Schools  
Supervisor of Elections  
County Commissioner – District 1  
County Commissioner – District 3  
County Commissioner – District 5  
School Board Member – District 3  
School Board Member – District 5  
Soil / Water Conservation Board – Seat 1  
Soil / Water Conservation Board – Seat 5

### CITY OFFICES

City Council Member – District 1  
City Council Member – District 2  
City Council Member – District 3